


PLUS

for indoor use only


Scroll Board - Instruction Manual

Thank you for purchasing our “Scroll Board” before use, please read this instruction manual carefully and use the product correctly. Keep this manual in a safe place for future reference.

1. Please follow these instructions for your safety.

WARNING

- Installation of this unit requires professional expertise. Wall mounting requires special brackets and construction work. (For installation, please contact our authorized dealers or sales offices.)
When installing the unit, ensure that the wall has sufficient strength to withstand the total weight of the unit and mounting brackets over a long period of time, including during earthquakes. If the wall is not strong enough, please reinforce it.
- When disposing of the product, please consult with the store where it was purchased. Incineration may release toxic gases.

CAUTION

- Assemble and install the product according to the included assembly and installation instructions. Incorrect assembly or installation may cause damage or injury.
- Do not tilt the unit more than 12 degrees. It may fall and cause damage or injury.
- Do not place heavy objects on top of the unit. It may become unbalanced and fall, resulting in injury.
- Do not hang from or lean against the unit. It may fall and cause damage or injury.
- Do not place the unit on an unstable or slanted surface. It may fall or tip over, causing injury.
- Always lock the casters during use. Unlock them when moving the unit. Failure to do so may result in damage or injury.
- Do not allow children to operate the unit. It may cause an accident or injury.
- Do not install the unit near fire. It may result in a fire.
- Do not use the unit if any screws are loose; tighten them securely. Loose parts may lead to damage or injury.
- If any abnormalities are found, stop using the unit and consult your retailer. Continued use may result in damage or injury due to tipping.
- Do not use the unit for purposes other than its intended use, such as a cart. It may cause an accident or injury.
- Do not disassemble or modify the unit. It may cause damage or injury.

2. Precautions for Use

- Avoid direct sunlight and high temperatures from heating equipment. This may cause discoloration or deformation.
- Do not place the product in areas with high humidity. It may cause corrosion or deformation.
- Do not use the product outdoors or in areas where it may be exposed to water. This may cause rust or damage.
- Do not handle the product roughly or use it for purposes other than its intended use. This may cause malfunction, damage, or accidents.
- Sudden movement of the sheet surface may damage the internal mechanism or the sheet surface. Move it slowly.
- Do not leave writing on the sheet surface for extended periods. It may become difficult to erase.
- Depending on usage time and conditions, the sheet may no longer perform as intended, and writing may become hard to erase.
- Do not hit or pierce the surface of the sheet with sharp or hard objects.
- Avoid using tape or adhesives on the sheet surface.
- Do not write with markers over the joints of the sheet.
- Install the product on a level surface. Use on an uneven surface may deform the unit or cause damage or injury.
- Avoid areas with dust or high humidity. This may cause discoloration or deformation.
- When moving the unit, do not bump it into desks, walls, or other hard surfaces. Such impact may cause damage or deformation.
- If water or drinks are spilled on the product, wipe it off immediately. This may cause discoloration or deformation.
- Use only whiteboard markers and erasers specifically designed for whiteboards when writing or erasing.
- Do not use oil-based markers or paint markers, as the writing cannot be erased.
- Do not use the sheet surface as a projection screen.
- When lending the unit to others, be sure to explain the proper handling instructions thoroughly.


3. Maintenance Instructions

- Do not use thinner, benzine, petroleum, acid, polishing agents, scrubbing brushes, or boiling water to clean the main unit or the sheet surface, as these may cause discoloration or damage to the sheet.
- Do not use oil-based markers or paint markers. Writing made with these cannot be erased, so they must never be used.
- When writing or erasing on the sheet surface, use whiteboard markers and erasers specifically designed for whiteboards. Please read the instructions on the marker or eraser body or the packaging carefully before use.
- If the sheet surface becomes dirty, wipe it with a well-wrung damp cloth. Before the surface dries, wipe it again with a clean, soft, dry cloth to finish.
Do not use heavily soiled erasers, wet tissues, office cleaning sprays, or neutral detergents.
- Using a dirty eraser can make the sheet surface dirtier and harder to clean.
The sponge part of the included eraser can be removed from the case and rotated or flipped to use a clean surface.
The recommended eraser (ER-44369) is economical, as all four sides can be used by rotating.

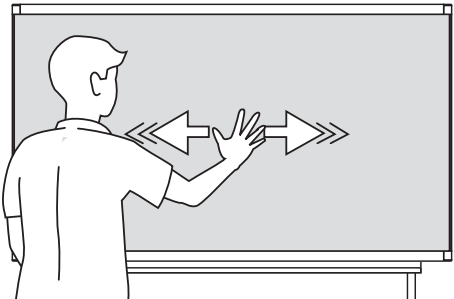
4. How to Use

How to Move the Sheet Surface

Gently move the sheet using the palm of your hand.
It can be moved either to the left or right, but please place your hand near the center of the board surface and slide it slowly.

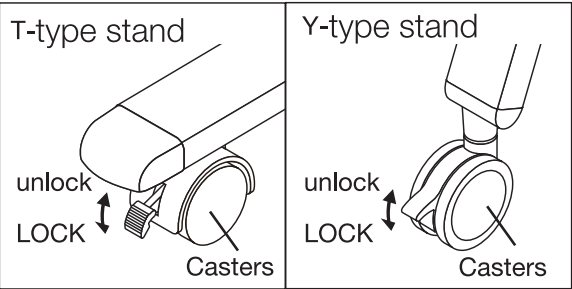
Caution

Sudden movement of the sheet surface may damage the internal mechanism or the sheet itself. Always move it slowly and carefully.




How to Use the Caster Lock Mechanism

After installation, use the lever to lock (fix) the casters.
Before moving the unit, unlock the casters.
Pressing the lever down locks the casters.
Lifting the lever up unlocks them.

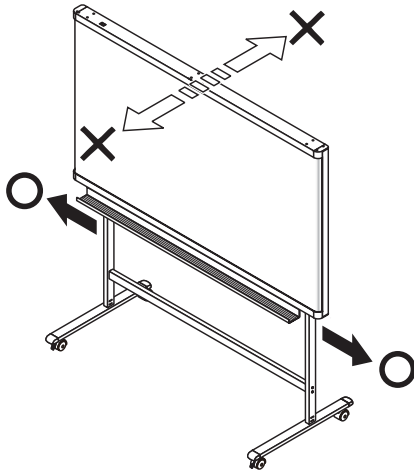


How to Move the Main Unit

Be sure to unlock the caster lock mechanism before moving the unit in the direction indicated by the arrows.

Caution

Do not move the unit by grabbing the sheet surface.
Doing so may cause the sheet to bend or become scratched.



5. Installation

This product can be purchased as a set consisting of the main unit with either T-type stand, Y-type stand, or a wall-mounting bracket, or by combining the main unit with optional accessories. The installation outline and the reference manuals are listed below. Please have the installation performed by a qualified contractor. (For installation, please contact our authorized dealers.)

Set Name	Installation Summary	Reference Manual
Main Unit + T-type stand Set	Assemble the T-type stand. Attach the tray to the main unit and mount it onto the T-type stand.	Scroll Board T-type stand Assembly & Installation Manual
Main Unit + Y-type stand Set	Assemble the Y-type stand. Attach the tray to the main unit and mount it onto the Y-type stand.	Scroll Board Y-type stand Assembly & Installation Manual
Main Unit + Wall-Mount Set	Attach the wall-mount bracket to the wall. Then attach the tray to the main unit and mount it onto the bracket.	Wall Mount Bracket Installation & Assembly Manual

6. Assembly Instructions

- Refer to the corresponding assembly manual mentioned above for how to assemble the unit.
- Always perform assembly and installation according to the assembly/installation instructions. Improper assembly may lead to injury.
 - Please check all assembly parts and components before starting.
 - You will need a Phillips screwdriver, size No.2, for assembly.

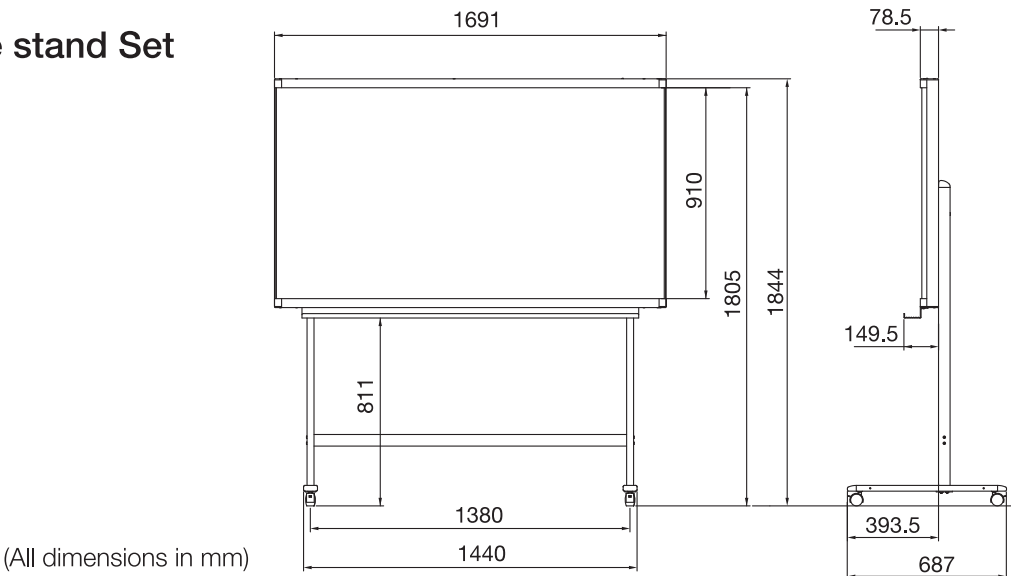


List of Items Included in the Main Unit Package

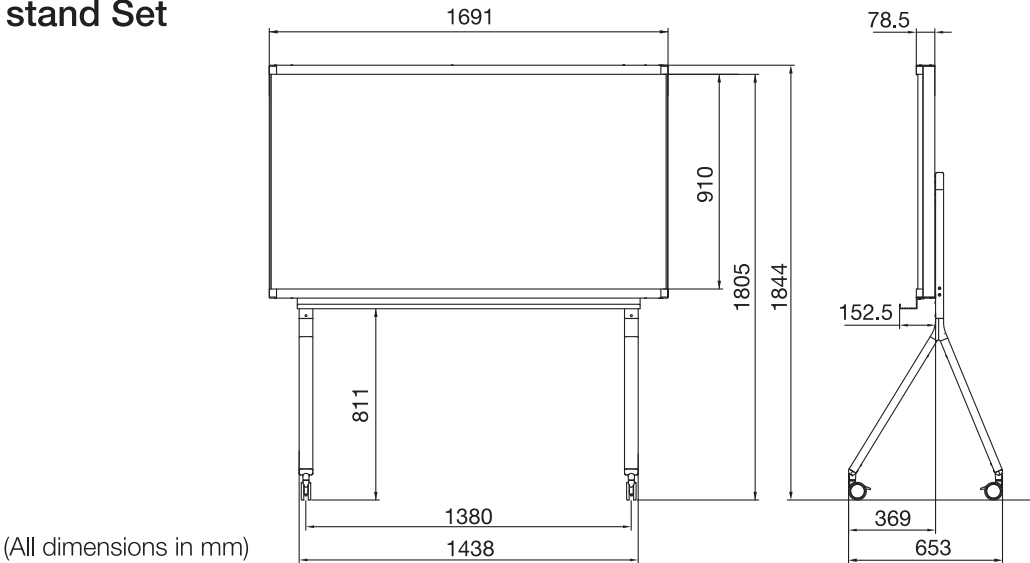
Main Unit × 1	Tray × 1	Dedicated Eraser × 1	Board Markers × 2 (Black and Red)
Instruction Manual × 1 (this document)			

7. Product Set Diagrams

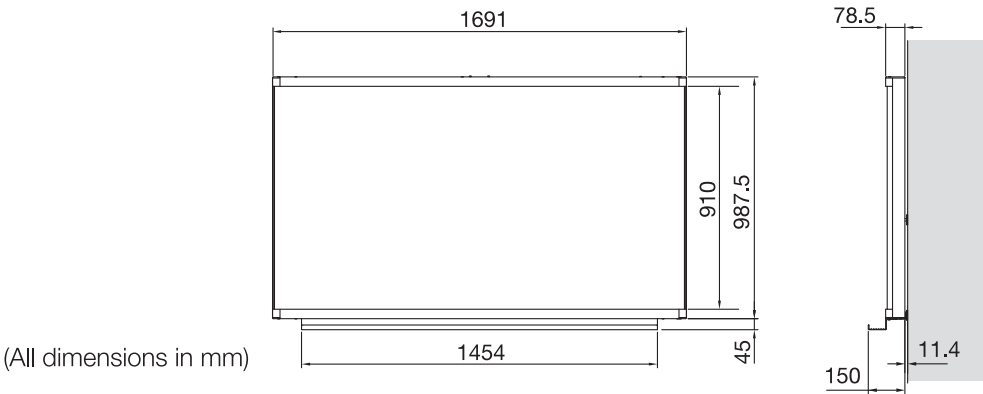
Main Unit + T-type stand Set – External View



Main Unit + Y-type stand Set – External View



Main Unit + Wall-Mount Set – External View



8. Product Inquiries

For inquiries related to this product, please check the product number and serial number, and contact your retailer: